

Sunón



Sunón

European R&D Center

Add: Brunnenstrasse 156, 10115 Berlin, Germany

Sunon Mexico Manufacturing Base & Experience Center

Add: Calle Palomas No. 201, Parque Industrial Hofusan, Salinas Victoria, Nuevo León CP 65500

USA Headquarters & Experience Center

Add: 311 N Green Street, Suite 900, Chicago IL 60607

Singapore Branch & Experience Center

Add: #01-02 R Building, 18 Robinson Road, Singapore 048547

India Branch & Experience Center

Add: Floor I & II, 643, Rd Number 36, Aditya Enclave, Venkatagiri, Jubilee Hills, Hyderabad, Telangana 500033, India

Headquarters & Experience Center - Sunon Technological Innovation Park

Add: No.1666 Zhixing Road, Xiaoshan District, Hangzhou, Zhejiang, China

     @sunonfurniture www.sunonglobal.com info@isunon.com



H5

A white ergonomic office chair with a mesh backrest and armrests is positioned on a small, circular concrete pedestal. The pedestal sits on a large, dark rock in a body of water. The background features rolling hills and mountains under a clear blue sky, all rendered in a monochromatic blue color scheme. The water has gentle ripples, and some reeds are visible in the foreground.

Cloud-Like Comfort
Healthy Posture Always

"When you sit down to work, your focus should be on the work itself rather than the chair you are sitting on. The chair should adapt to your movements, not the other way around."



Sunon Research Center and B4K Design Studio Join Forces

We have decided to return to the most basic relationship between chairs and the body for research. Through comprehensive experiments involving research on human behavior, pressure, sensory perception, aesthetics, and even environmental protection, we have explored how chairs can adapt to the spinal movements of the human body. The result is the first benchmark of Sunon lightweight and self-adaptive seat, which will show you what "ideal comfortable seating" really means.



Comfort to the Edge

You can completely relax and enjoy laziness from your neck to your hips.



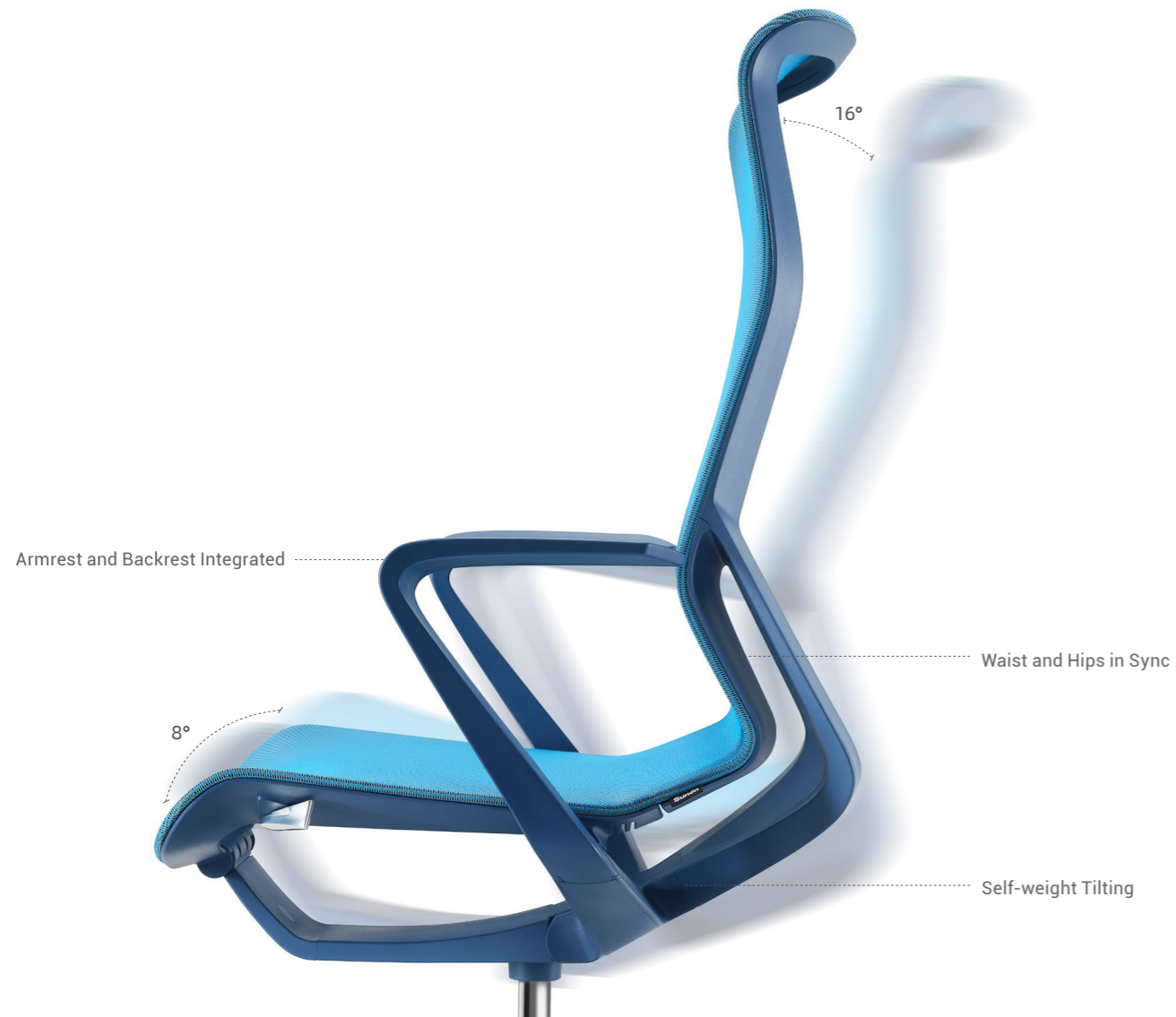
Relieved !

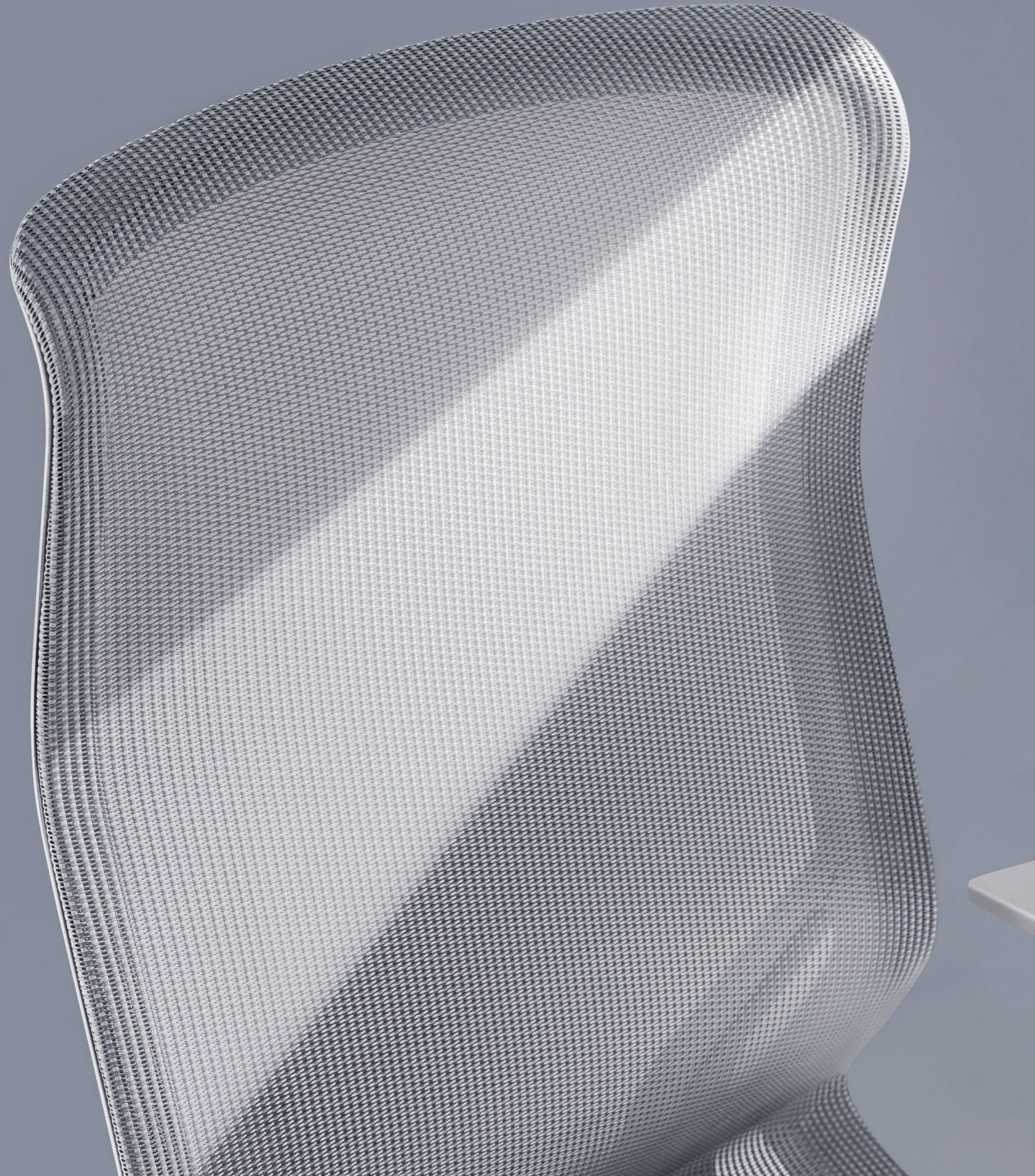
You Will Forget You Are Sitting in a Chair

The integrated chair structure externalizes the contours of the spinal column, and is designed in a structured way based on the golden curves of the neck, shoulders, waist, hips, and legs, providing a differentiated sensory experience of "fitting, supporting, and pulling" for the entire spinal column. This allows the muscles of the body to be fully relieved of pressure, and from the moment of sitting down, one can feel as if gravity has been forgotten.

Move With You

From manual setting to dynamic adjustment, the H5 self-weight tilting function truly achieves an interactive seating experience where the chair becomes one with the person. The backrest can tilt up to 16° and the seat can rise up to 8°, following the body's sitting posture changes, allowing the chair to become a part of the body, closely fitting and stably supporting.





Flexible

Self-adjusting



One Chair One Colour One Space

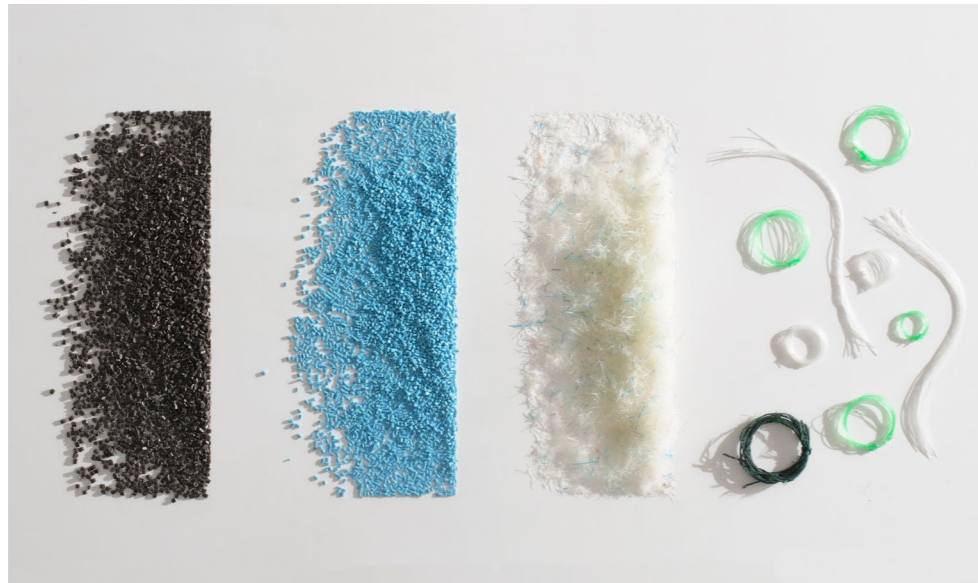
From head to toe, in one colour, H5 creates a minimalist and pure single-color trend, presenting a truly visually harmonious and unified spatial solution.



Colourful

Making an Impressive Appearance





Reduce Carbon Footprint , Protect Our Planet

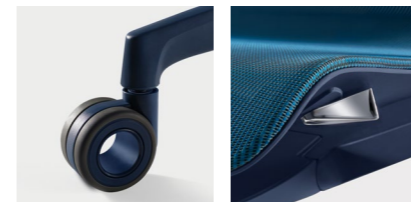
This is a conversation with nature. With environmental issues increasing, the ocean is gradually becoming the final destination for plastics. H5 uses technology to assist in a low-carbon future, using ocean-friendly recycled plastic for various parts of the chair and making maximum use of materials.





Details

Foldable chair back, compact and portable for outdoor travel. H5 reduces packaging volume, increases container capacity by 1.4x, and lowers carbon emissions.



silent hollow castors tilt locking knob

Specification



Warm white Metal gray Ink blue Marsala red Ink Black

CHF80SW
W600*D600*H1065(mm)

Material



CW-HP21 CW-HP80 CW-HP30 CW-HP10

Given that products may be updated constantly, no further notice will be given in regard of changes in specification, and the real product shall be considered as final.