

# Sunón

## European R&D Center

Add: Brunnenstrasse 156, 10115 Berlin, Germany

## Sunon Mexico Manufacturing Base & Experience Center

Add: Calle Palomas No. 201, Parque Industrial Hofusan, Salinas Victoria, Nuevo León CP 65500

## USA Headquarters & Experience Center

Add: 311 N Green Street, Suite 900, Chicago IL 60607

## Singapore Branch & Experience Center

Add: #01-02 R Building, 18 Robinson Road, Singapore 048547

## India Branch & Experience Center

Add: Floor I & II, 643, Rd Number 36, Aditya Enclave, Venkatagiri, Jubilee Hills, Hyderabad, Telangana 500033, India

## Headquarters & Experience Center - Sunon Technological Innovation Park

Add: No.1666 Zhixing Road, Xiaoshan District, Hangzhou, Zhejiang, China



# Sunón



# LOCKE



### Design Story

The Locke is named in honor of John Locke, the "father of liberalism". It is dedicated to both Asian and Western markets. It combines practical features with comfort, so users can easily set up their workspace. This design helps boost productivity while keeping things cozy and comfortable.

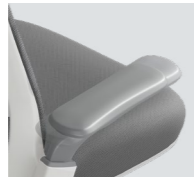


The armrests extend outward like wings, The base has fluid, dynamic lines, and together with the integrated base, they create a futuristic appearance.

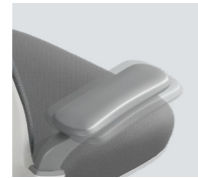


Locke redefines comfort and control in modern workspaces. Smooth, responsive adjustments are the same as paddle shifters. Six-way adjustable support for your perfect sitting position. Soft, padded lumbar support for a cozy, home-like feel.

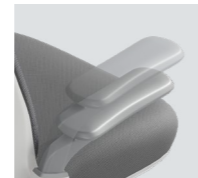
4D Armrests, PU Material,  
Quick Assembly in 3 Seconds,  
40mm Adjustable Lumbar Support,  
Dual-Sided Soft Padding.



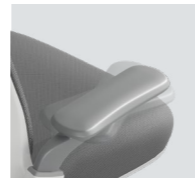
Forward/Backward 30mm



Left to Right 16mm



Up/Down 70mm



15° Pivot



50mm Seat Depth Adjustment



Integrated Armrests with 4-position Synchronous Tilt







Locke, The Global-Friendly Stress-Relief Chair.

Specification



CLG60SW  
W665\*D590\*H1020(mm)



CLG61SW  
W665\*D590\*H1020(mm)



CLG62SW  
W665\*D585\*H1035(mm)



CLG63SW  
W665\*D585\*H1035(mm)



CLG64SW  
W665\*D585\*H1020(mm)



CLG65SW  
W665\*D585\*H1020(mm)



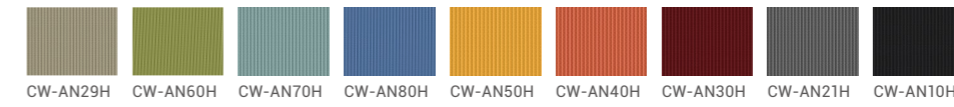
CLG66SW  
W665\*D585\*H1020(mm)



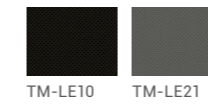
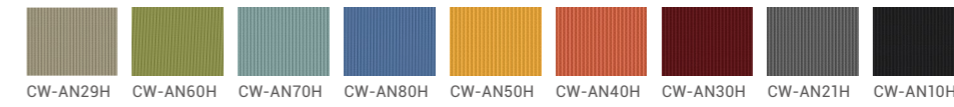
CLG67SW  
W665\*D585\*H1020(mm)

材质 Material

Backrest



Seat



Given that products may be updated constantly, no further notice will be given in regard of changes in specification, and the real product shall be considered as final.